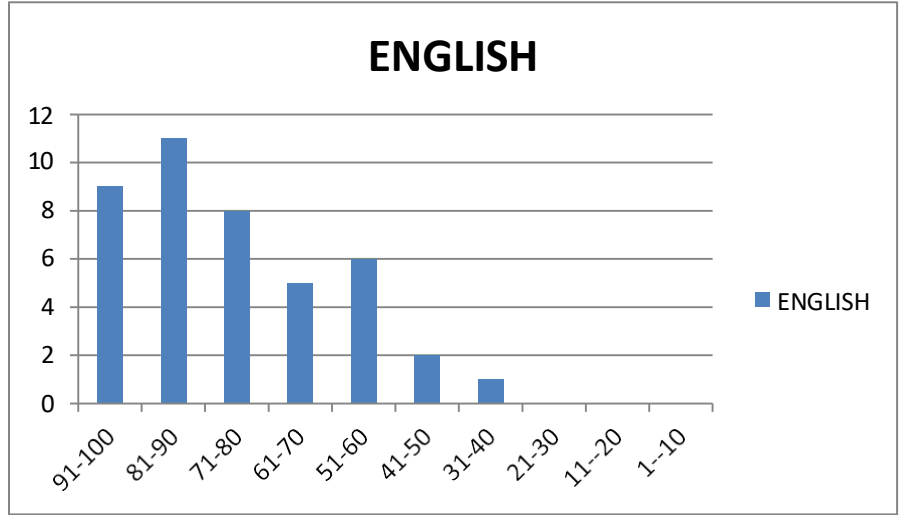


**MAHATMA EDUCATION SOCIETY'S
HOCL SCHOOL
ACADEMIC YEAR 2024-25
RESULT ANALYSIS
SA-2**

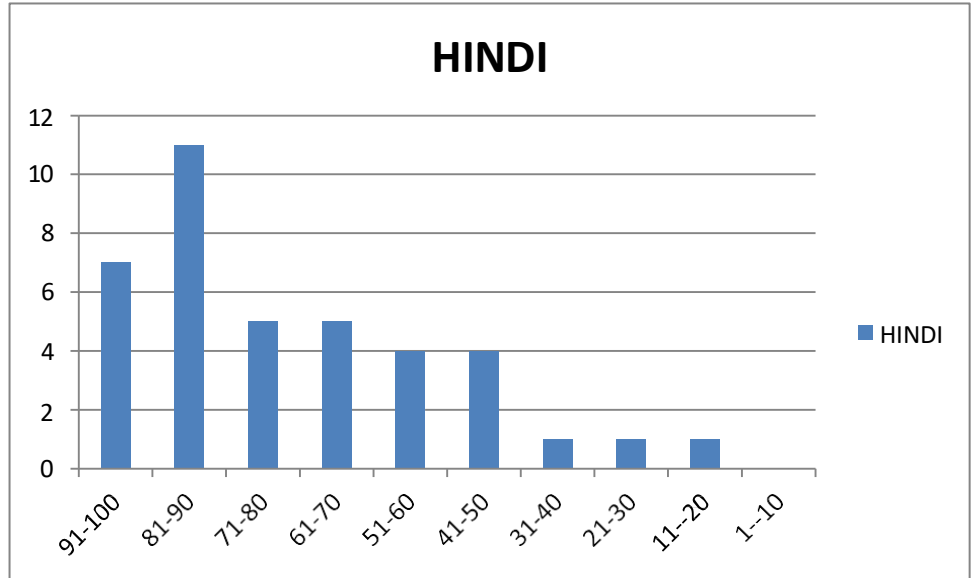
CLASS -1 DIV- A

CLASS TEACHER-MANISHA JADHAV

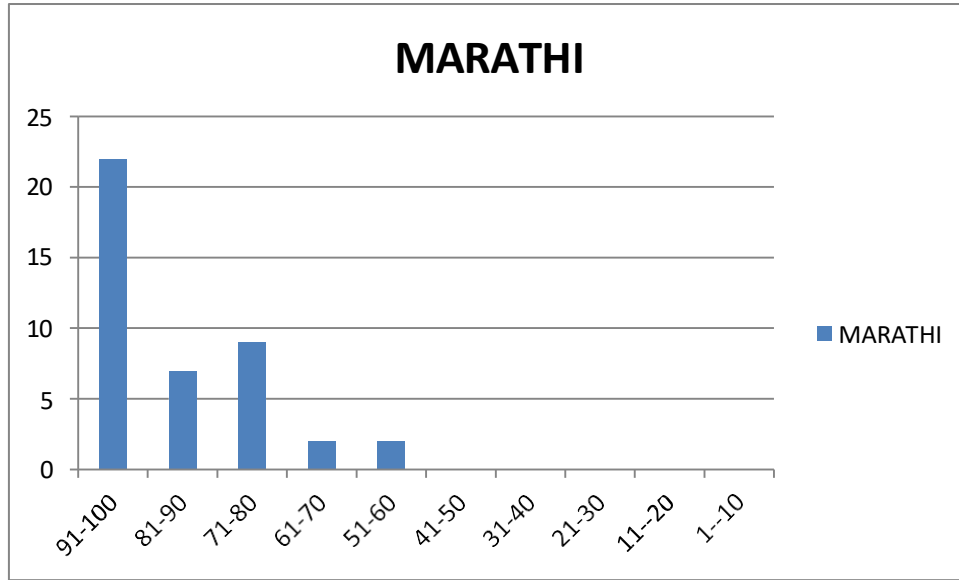
	NO.OF STUDENTS
MARKS	ENGLISH
91-100	9
81-90	11
71-80	8
61-70	5
51-60	6
41-50	2
31-40	1
21-30	0
11--20	0
1--10	0



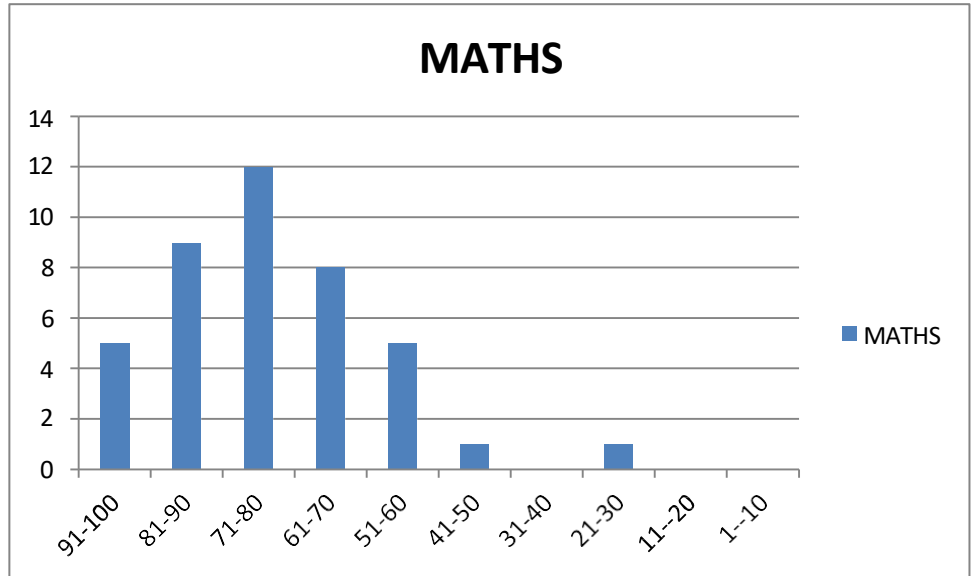
	NO.OF STUDENTS
MARKS	HINDI
91-100	7
81-90	11
71-80	5
61-70	5
51-60	4
41-50	4
31-40	1
21-30	1
11--20	1
1--10	0



	NO.OF STUDENTS
MARKS	MARATHI
91-100	22
81-90	7
71-80	9
61-70	2
51-60	2
41-50	0
31-40	0
21-30	0
11--20	0
1--10	0



	NO.OF STUDENTS
MARKS	MATHS
91-100	5
81-90	9
71-80	12
61-70	8
51-60	5
41-50	1
31-40	0
21-30	1
11--20	0
1--10	0



	NO.OF STUDENTS
MARKS	EVS
91-100	5
81-90	9
71-80	10
61-70	8
51-60	7
41-50	1
31-40	0
21-30	5
11--20	0
1--10	0

